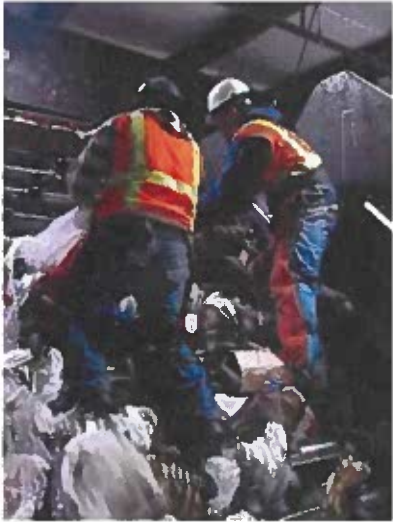


The Portage County Solid Waste Management District is asking that all residents refrain from putting their recyclables in plastic bags. Plastic bags are often wet or have food waste on them when placed in the curbside recycling and contaminate other materials. Additionally, at recycling facilities, these plastics can jam sorting and processing equipment, leading to frequent shutdowns so workers can remove the tangled materials. The downtime results in higher processing costs which are passed on to the District.



DO NOT BAG
Recyclables

- Collecting recyclables in a bag? Empty the contents into the cart.
- Return plastic bags to retailers.

You can recycle your plastic bags at the grocery store or contact your local Lions Club. Many of them are collecting plastic bags and receiving a new park bench for every 500 pounds they turn in.